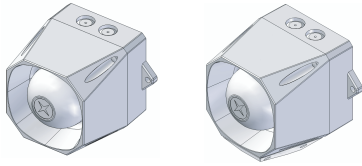
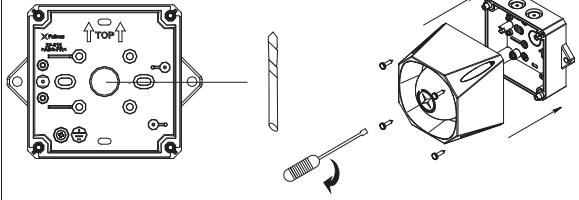
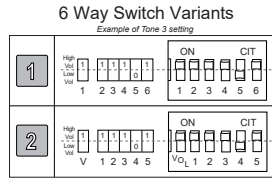
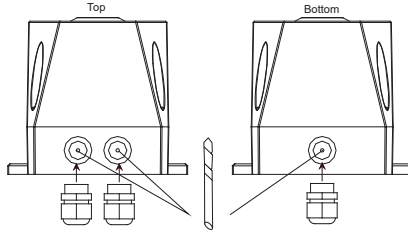
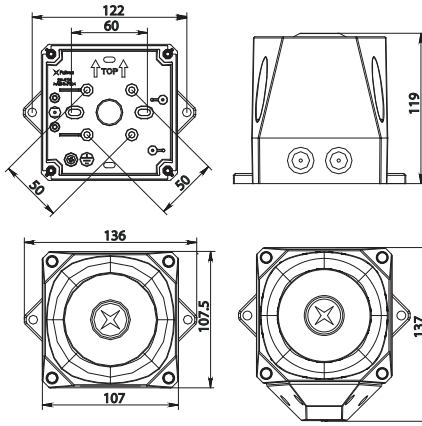


asserta mini

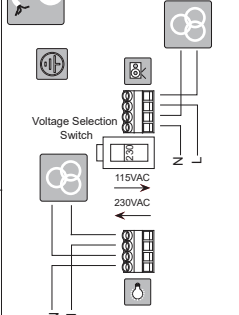


	Sounder + Mains Module	Sounder/Beacon	
	Mains Module 110VAC ~ 240VAC Sounder 24VDC	115VAC	230VAC
	<20mA	80mA	68mA
	0.28mm ² ~ 2.5mm ²	0.28mm ² ~ 2.5mm ²	
	-25°C ~ +70°C	-25°C ~ +70°C	
	ABS V0	ABS V0	
	Type B = IP66	Type B = IP66	
	32	32	
	-	1Hz	

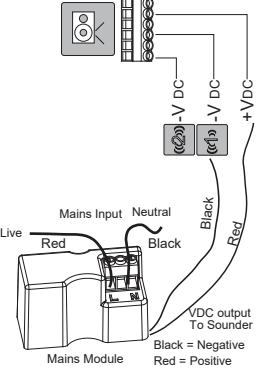
Product exceeds minimum requirements of EN54-3
 See www.fulleon.com
 Le produit dépasse les exigences minimum de EN54-3
 Voir www.fulleon.com
 Das Erzeugnis erfüllt die Mindestanforderungen von EN54-3.
 Siehe www.fulleon.com
 Il prodotto supera i requisiti minimi previsti dalla norma EN54-3
 Vedi www.fulleon.com
 Product overtreft de minimale vereisten van EN54-3.
 Zie www.fulleon.com
 El producto excede los requisitos mínimos de la norma EN54-3
 Véase www.fulleon.com
 Produkten överträffar minsta krav enligt EN54-3
 Se www.fulleon.com



Mains Sounder/Beacon



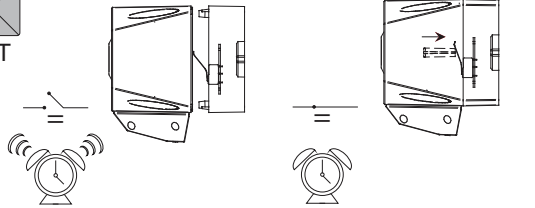
Sounder + Mains Module



Installation must be in accordance with relevant national wiring regulations or codes for the intended application and voltages employed.

A suitable and readily accessible disconnect device shall be incorporated external to the equipment. An external 1A Anti Surge device is required to protect the installation.

!! Warning !!
 Mains to be wired to the module in base only. Do not wire directly to sounder.



Code	Code	Code	Waveform	Frequency	Pulse	Tone	@20°C					
							Sounder + Mains Module		115VAC Sounder + Beacon		230VAC Sounder + Beacon	
							mA	dB(A)	mA	dB(A)	mA	dB(A)
1	14	11111		800 & 970Hz	2Hz (250ms-250ms)	BS Fire Tone	13	100	67	104	43	103
2	14	11110		800 & 970Hz	7Hz (7%)	BS Fire Tone	13	103	64	104	42	103
3	14	11101		800 & 970Hz	1Hz (1%)	BS Fire Tone	13	105	61	105	41	105
4	14	11100		2850Hz	Steady		28	104	66	106	41	107
5	4	11011		2400 ~ 2850Hz	7Hz		32	111	64	110	41	109
6	4	11010		2400 ~ 2850Hz	1Hz		33	112	63	111	41	110
7	14	11001		500 ~ 1200Hz	3.5s Sweep, 0.5s silence, then repeat	Dutch Fire Tone	11	106	60	106	41	106
8	14	11000		1200 ~ 500Hz	1Hz	DIN Tone	15	105	67	105	42	106
9	4	10111		2400 & 2850Hz	2Hz (250ms-250ms)		30	109	65	108	41	107
10	14	10110		970Hz	0.5Hz (1s On / 1s Off)		9	102	64	104	42	104
11	14	10101		800 & 970Hz	1Hz (500ms-500ms)	BS Fire Tone	13	102	62	104	43	104
12	4	10100		2850Hz	0.5Hz (1s On / 1s Off)		13	105	65	106	41	106
13	14	10011		970Hz	0.8Hz (250ms On / 1s Off)		6	102	67	103	40	103
14	1	10010		970Hz	Steady	BS Fire Tone	14	102	64	104	42	104
15	14	10001		554 & 440Hz	100ms ~ 400ms	French Fire Tone	17	105	64	106	41	106
16	19	10000		660Hz	3.3Hz (150ms On / 150ms Off)	Swedish Fire Tone	8	101	65	102	42	102
17	19	01111		660Hz	0.28Hz (1.8s On / 1.8s Off)	Swedish Fire Tone	7	102	60	103	52	103
18	19	01110		660Hz	0.05Hz (13s Off / 6.5Hz On)	Swedish Fire Tone	6	102	66	103	40	103
19	1	01101		660Hz	Steady	Swedish Fire Tone	12	102	66	103	39	103
20	19	01100		554 & 440Hz	0.5Hz (1s On / 1s Off)	Swedish Fire Tone	15	105	64	107	39	106
21	14	01011		660Hz	1Hz (500ms ~ 500ms)	Swedish Fire Tone	8	102	62	103	41	103
22	14	01010		2850Hz	4Hz (150ms On / 100ms Off)	Pelican Crossing	19	104	64	106	42	107
23	14	01001		800 ~ 970Hz	50Hz	BS Fire Tone	13	103	66	104	43	104
24	4	01000		2400 ~ 2850Hz	50Hz		32	110	66	110	42	110
25	14	00111		970Hz	3 x 500ms pulses followed by 1.5s silence then repeat	ISO 8201	7	102	66	104	40	104
26	14	00110		970 & 800Hz	3 x 500ms pulsed sweep followed by 1.5s silence	ISO 8201	7	104	66	105	40	106
27	14	00101		970 & 800Hz	3 x 500ms pulsed two tone followed by 1.5s silence		7	102	67	104	39	103
28	10	00100		800 & 970Hz	2Hz (250ms ~ 250ms)	BS Fire Tone	13	102	66	104	40	104
29	988Hz	00011		990 & 650Hz	2Hz (250ms ~ 250ms) (Symphoni Tones)	BS Fire Tone	21	105	67	106	42	106
30	510Hz	00010		510 & 610Hz	2Hz (250ms ~ 250ms) (Squashni Micro Tones)	BS Fire Tone	17	104	63	106	41	105
31	14	00001		300 ~ 1200Hz	1Hz		21	107	63	107	39	109
32	32	00000		510 & 610Hz	1Hz (500ms ~ 500ms)		17	105	63	106	40	106