

## SmartLight

Single loop analogue-addressable fire detection control panel



The compactness, simple end-user operation, trouble-free installation and uncomplicated programming procedures make this highly competitive control panel ideal for small applications that require first rate performance. It is exactly this market segment that the SmartLight control panel finds its niche. It is perfect for those applications which require a limited number of detectors yet call for the reliability and performance that only analogue-addressable systems can provide. With this application typology in mind, SmartLight is a valid alternative to conventional systems.

The SmartLight control panel is based on OpenLoop technology. Thanks to the many protocols supported by its detection Loop, SmartLight is capable of managing a wide range of detectors and accessory devices and thus offers maximum flexibility and ease-of-use. LOOPMAP and VERSA++ technology combined with ENEA series devices make this control panel a state-of-the-art tool which forms the basis of secure, professional installations capable of satisfying every need.

SmartLight provides 2 supervised alarm outputs (alarm and fault) for the connection of audible-visual signaling devices, a power-supply output for ancillary devices and an output for the activation of external dialers. The control panel manages an ample spectrum of status signals: alarm, pre-alarm, fault, monitor, early warning, bypass, test, etc.

SmartLight manages an RS485 BUS for remote connections.

The BUS supports 4 remote repeater panels (SmartLetUSee/LCD-Lite) which replicate all the fire-alarm system data and control panel functions. The BUS also supports 2 power-supply stations and allows the control panel to supervise their functions and activate (deactivate) their outputs during predefined conditions.

Programming the system from the control panel is straightforward and trouble-free thanks to the easy-to-follow instructions on the graphic display. The system can also be configured from a PC using INIM's user-friendly software, the pre-set data can be downloaded via an RS232 serial connection. This method makes greatly speeds up the system configuration and startup phases.

## Accessory items



### SmartLetUSee/LCD-Lite

Remote repeater panel equipped with display and user-interface keypad (up to 4 for each control panel)



### SmartLetLoose/ONE

Fire extinction board. Provides control panel with a Fire Extinction Gas control capabilities. Certified CPD- EN12094-1.



### SmartLevel

Power-supply station. Connectable to the RS485 BUS (for supervision and management of the control panel power-supply-station outputs. Refer to "Power-supply stations" section for details.

## Features and Technical specifications

- Single-loop analogue-addressable control panel
- Certified EN54-2/EN54-4
- Certified EN12094-1 (Fire extinction)
- VERSA++ Technology (ample range of sensitivity and operative modes)
- LOOPMAP Technology (automatic wiring reconstruction and addressing capabilities)
- Supports 240 devices (64 for "S" model)
- Manages 30 zones (16 for "S" model)
- Manages SmartLetLoose/ONE Fire Extinction board (EN12094-1 compliant accessory item)
- Supports 4 remote repeater panels
- Supports 2 power-supply stations (SmartLevel)
- 1 supervised alarm output (NAC)
- 1 output for communication device activation (dialers)
- 1 supervised fault output
- 1 dry-contact fault output
- 1 power-supply output for external devices
- Battery shutdown relay for deep discharge conditions
- Backlit graphic display for easy management of installer/user interface
- Navigation keys for easy access to graphic display functions
- Fast keys (Silence, Reset, Evacuate, Investigate)
- RS485 BUS for repeater panel and power-supply station (SmartLevel) connections
- Buzzer (provides audible signals)
- 8 Timers
- 8 Logical equations
- RS232 connector for programming via PC
- Programming software
- Easy system programming from the control panel
- Access key for level 2 functions (EN54 compliant)
- Battery charge optimization (via thermal probe)
- Battery efficiency test
- Extensive application of SMD reflux technology for higher reliability
- Metal enclosure
- Mains power supply 230Vac
- Switching power supply/battery charger 1.4A @ 27.6Vdc
- Battery housing for two 7Ah, 12V batteries
- Dimensions (HxWxD): 325x325x80mm
- Weight (without batteries): 3Kg

# SmartLight analog-addressable control panels



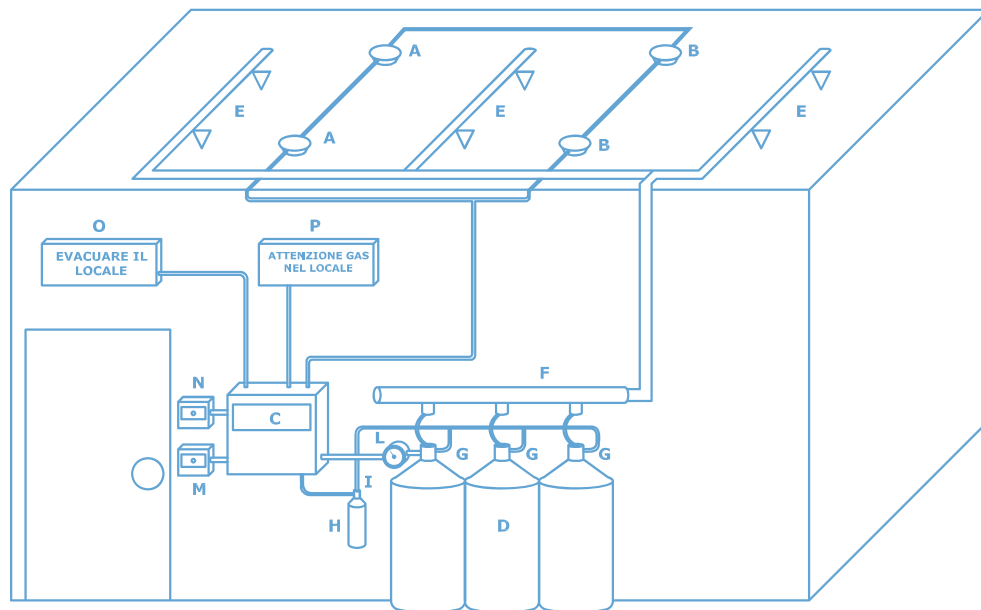
EN 54-2  
EN 54-7  
EN 12094-1

## Fire extinction

Equipaggiando le centrali della serie SmartLight (qualsiasi modello) con la scheda di estinzione SmartLetLoose/ONE si ha a disposizione una centrale di spegnimento in grado di controllare un canale di spegnimento a GAS certificata secondo la norma EN12094-1. La centrale mette a disposizione tutte le funzionalità previste dalla normativa e consente la connessione dei vari accessori necessari per la gestione di un sistema di spegnimento (vedi sezione catalogo "Accessori Spegnimento").

### Diagram key

- A: loop (andata).
- B: loop (ritorno).
- C: SmartLight fire extinction control panel.
- D: gas extinguisher cylinders
- E: gas release nozzles
- F: gas collectors
- G: pneumatic release valve
- H: pilot cylinder for gas release
- I: pilot cylinder electrovalve
- L: pressure switch
- M: manual activation button
- N: stop extinguisher gas button
- O: audio visual gas-release-imminent indicator
- P: audio visual gas-present indicator



Esempio tipico di sistema di spegnimento a gas.

## Main Features

- Certified EN12094-1
- Microcontroller board supervised by the CPU
- Indicator LEDs (status, disabled, faults)
- Supervised terminals for manual fire extinction commands
- Supervised terminals for STOP fire extinction commands
- Supervised terminals for pressure switch control
- Supervised output for fire suppression system activation
- Supervised output for signaling activation (pre-extinguish)
- Supervised output for "Gas in area" signaling

## ORDER CODES

**SmartLight/G:** centrale analogica indirizzata ad 1 Loop. Gestisce fino a 240 dispositivi sul Loop e 30 Zone.

**SmartLight/S:** centrale analogica indirizzata ad 1 Loop. Gestisce fino a 64 dispositivi sul Loop e 16 Zone.

**SmartLetLoose/ONE:** expansion board

**SmartLetUSee/LCD-Lite:** remote-control repeater panel for SmartLine and SmartLight control panels

**SmartLeague:** programming and management software

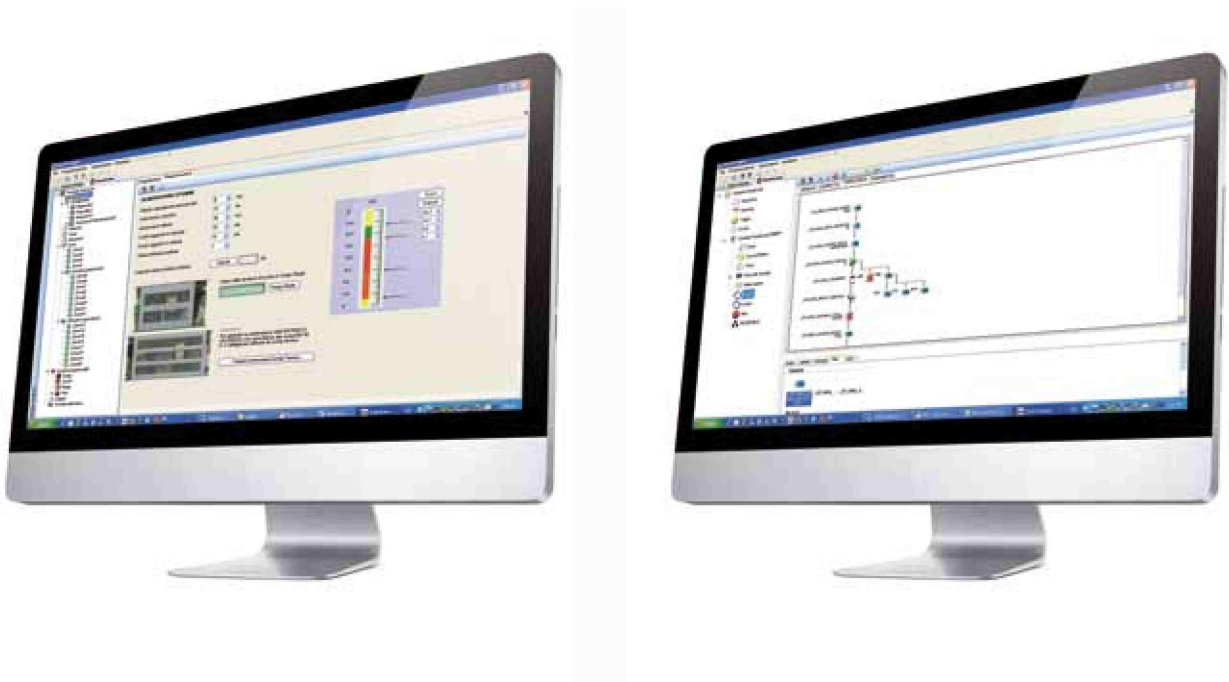
**Link232F9F9:** RS232 cable link between PC and INIM devices

**IPS24040:** switching power supply/battery charger 1.4A@27.6Vdc

**ProbeTH:** thermal probe for optimized battery charge

## Programming software

The SmartLeague programming and management software is intuitive and simple to use. This indispensable tool allows security professionals to control INIM fire detection systems with ease. It allows fast and easy control panel configuration and offers an overall view of the system. It is also capable of providing detailed wiring diagrams of the system terminals in accordance with the configured settings.



## Application diagram

