

SPRINT™ HOLDFAST

MAGNETIC LOCKS S03 SERIES

SPECIFICATIONS AND TECHNICAL DETAILS

Dimensions: S03 (single 280mmLx81.6mmHx46mmD)
Armature plate – 190mmLx70mmWx13mmD

Surface mounted

Current drawn: 420/12V, 210/24V

Dual voltage: 12v/24v DC

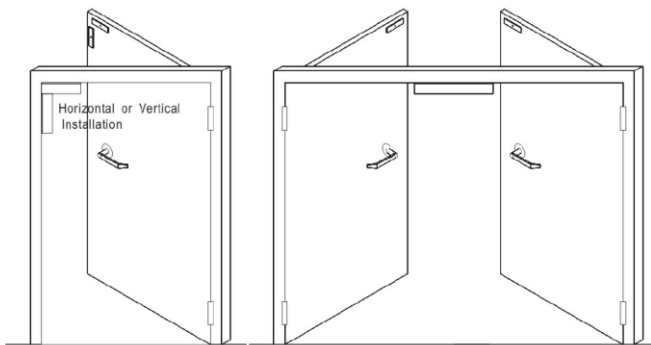
Options: LED, Timer, Lock and door status sensor

Holding force: 850kg

Built-in voltage spike suppressor

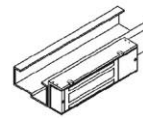


■ SUGGESTED INSTALLATION POSITIONS

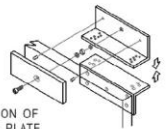


■ TYPICAL INSTALLATION

INSTALLATION OF MAGLOCK ON INSWINGING DOOR

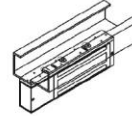


INSTALLATION OF
MAGLOCK BODY
ON DOOR FRAME

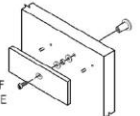


INSTALLATION OF
ARMATURE PLATE
ON DOOR LEAF

INSTALLATION OF MAGLOCK ON OUTSWINGING DOOR

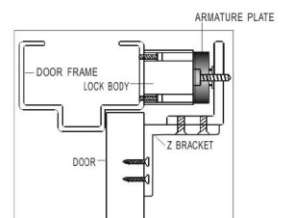
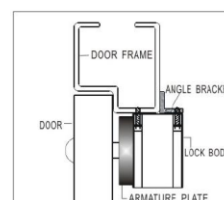
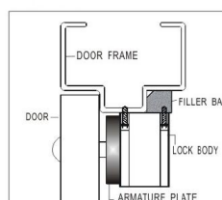
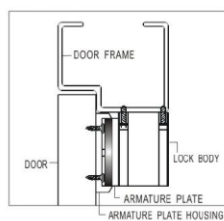
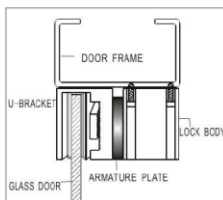


INSTALLATION OF
MAGLOCK BODY
ON DOOR FRAME



INSTALLATION OF
ARMATURE PLATE
ON DOOR LEAF

■ APPLICATIONS



SPRINT RESERVES THE RIGHT TO CHANGE SPECIFICATIONS WITHOUT NOTICE.



LISTED
AUXILIARY LOCK 3/4 HR. RATING
30JE