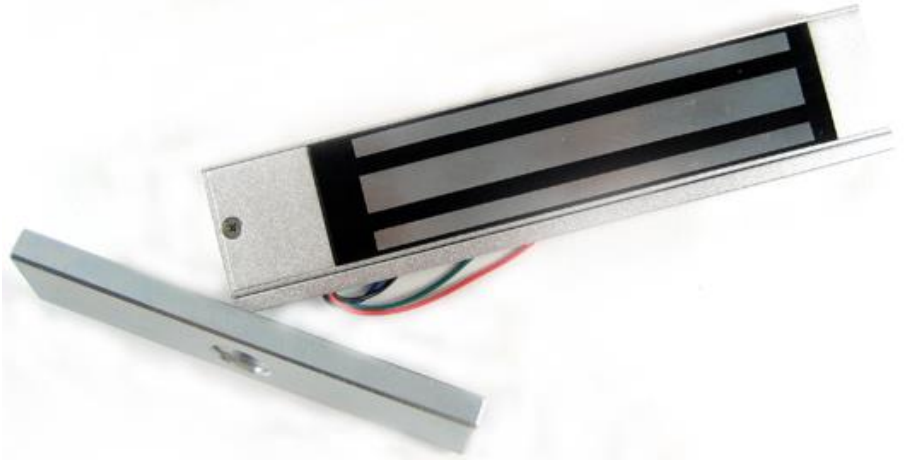


Model No: S0



Model No.	Lock Size	Armature Plate Size	Holding Force	Dual Voltage	Power / Current	Available Options	Approvals
S0	206x40x21mm	130x32x21mm	150KG	DC 12V DC 24V	250mA 400mA	LED Timer (0-90sec.) Dry Contact	CE/UL
S01 Single	250x42x26mm	200x55x15mm	280KG				
S02 Single	266x73x40mm	200x76x15mm	550KG				
S03 Single	280x81.6x40mm	190x70x13mm	850KG				
S01 Double	500x42x26mm	200x55x15mm	280KG x2				
S02 Double	532x73x40mm	200x76x15mm	550KG x2				
S01 Trim	1007x46x25mm	185x38x12.5mm	280KG				
S02 Trim	1007x68x46mm	200x76x15mm	550KG				
S01GL Weather-resistant	203x44x40mm	158x40x12mm	280KG				
S02GL Weather-resistant	220x63.5x41mm	185x61x16mm	550KG				
S01T Sliding / Mortise	228x38x27mm	185x38x12.5mm	280KG				
S01TS Shear	270x35x30mm	245x35x30mm	550KG		1.6A 900mA		

Mounting Brackets and Extension Hardware

(To match bracket, specify lock model when ordering)

Glass Door Mount/ U Bracket

Suitable for frameless glass door, with a glass thickness of 9-12mm

Adjustable L Plate

L/Z Set (a + b + c)

This accessory is designed for the assembly of the electro-magnets over the door, on the jamb and not on the header. There are three anodized aluminum parts: an `L` to fasten the electro-magnet, and the two parts of an adjustable `Z`, which receives the strike plate.

Slim extension

L-plate extension

Vital Features of SPRINT Holdfast™ Electro-Magnetic Locks

Holding force: Up to 850kg effectively stops intruders and thieves from either side of the doors.

Easy installation: Versatile adjustable mounting for new or existing installations and two extra long hardened cap screws for reinforced metal frames supplied at no extra charge. All other screws are made of stainless steel.

Magnetic Bond Sensor: Indicates that proper bond exists between the magnet and the armature and that the door is locked. This can be monitored remotely to provide assurance that the opening is secure. There is an LED for visual assurance.

Low energy consumption: Ensures long life, lower wiring costs and lower cost of operation.

Dual voltage: Input may be 12 or 24 volt DC. (AC input possible through a rectifier). Both voltages have the same holding force without temperature rise. Eliminates high inventory levels and reduces ordering errors.

Silent operation: No annoying noise such as humming or buzzing is present.

Appearance: Case is anodized aluminum. Magnetic faces are electroplated to preserve appearance and resist rusting.

Self aligning: Armature plate (door portion) accommodates all arcs of door swing. Requires no adjustment or maintenance after initial installation, includes rubber silencer.

Consistent Mounting Bracket Style: Means every model in the SPRINT family mounts the same way, even with top jamb (inswing) applications, ensuring quicker, more reliable installations, less installation problems, and greater end-user satisfaction.

Armature nut: Hardened steel sex nut (plated) for drill resistance use.

Time delay: Field adjustable for delayed relocking from 0-90 seconds.

Monitoring: Relay dry contact with LED.

Extreme high traffic: Excellent for very busy doors due to lack of "Wear-Out" moving parts.

Door gap: Maximum 3mm

Operating Temperature: 0 - 55°C

Operating Humidity: 0 - 95% (non-condensing).

Protection: Large electrical surges are prevented from destroying other electrical devices by factory installed surge suppressor (MOV) which also prevents lightning from destroying lock. SPDT factory installed relay isolates product from damage caused by interconnected devices.

Shipping protection: All products are shipped in a heavy duty carton to ensure final delivery quality.

THE POSITIVE FORCE IN ELECTRO MAGNETIC LOCKS

SPRINT Holdfast™ generation of electromagnetic locks with common features, appearance and circuit boards for easy selling, installation and maintenance. The Holdfast™ line has been simply designed; if you know one magnet in the family, you know them all. So, for high security, narrowline, or traffic control applications throughout your facility, SPRINT Holdfast™ is the positive force with universal appeal.

Product specifications and design are subject to continual improvement and may be upgraded without notice.

SPRINT provides security solutions for the toughest systems applications, with the industry's most complete selection of electro-magnetic locks. Each series provides 12/24V field selectability, a full array of electronic modular options and a 5 year warranty. Specify SPRINT Holdfast™ for your access systems.

Life Safe: Incorporates no latches or pin-like mechanisms ensuring instant release and conforming to building code standards.

Safe: Models are tested for electrical overload, over-heating, electrocution, insulation and burglary resistance according to UL 10C and BS EN1634.

Safe: Unlocks instantly when electricity is discontinued by switches, fire panel deactivation, or power failure.

When designing access systems SPRINT Holdfast™ offers perfect security against unauthorized entry. Perfect safety for evacuation. No moving parts for our magnetic locks. Nothing to jam or require adjustment. You will see the models with 850kg holding force on perimeter doors and compact 280 kg models on lower security interior doors. Built with anodized aluminum, with magnetic faces electroplated to preserve appearance.

Why is SPRINT Holdfast™ preferred by both installers and end-users? It's covered under two US patents and three separate UL categories. From performance, to options, to delivery, to technical support, it stands alone.

SPRINT. Originally America's largest OEM supplier of magnetic locks.

SPRINT. Now going it alone. With Holdfast™.

SPRINT Holdfast™ magnetic locks are made in, and/or have components from: USA, Mexico, Canada, Taiwan, Malaysia, China