

350PSI Flanged *Grooved Swing Check Valve

Model: MH-XQH-350FG-B

Flange*Groove End

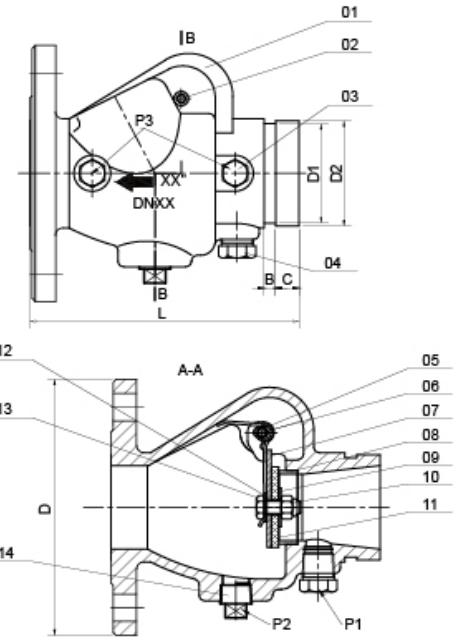
Technical Features

- Nominal Pressure: 350PSI
- Groove Standard: ANSI / AWWA C606 or Metric
- Flange Standard: ASME/ANSI B16.1 Class 125 or ASME/ANSI B16.42 Class 150 or BS EN1092-2 PN16 or GB/T9113.1
- Sizes: 2", 2½", 3", 4", 5", 6", 8", 10", 12"
- Approvals: UL, FM
- Maximum Working Pressure: 350 PSI (Maximum Testing Pressure: 700 PSI) conforms to UL 312 & FM class 1210
- Maximum Working Temperature: 80°C / 176°F
- Coating Details: Epoxy coated interior and exterior by Electrostatic Spray or Coating upon request
- Applications: Used in one-way flow pipeline to prevent the water from back flow



Valve Material List

| NO. | Name | Material | Standard |
|-----|---------------|----------------------------------|------------------------------|
| 1 | Valve Body | Ductile Iron | ASTM A536 65-45-12 |
| 2 | Bolt | Steel 1045 | ASTM A29 |
| 3 | Plug | Steel 1045 | ASTM A29 |
| 4 | Plug | Steel 1045 | ASTM A29 |
| 5 | Spring | Stainless Steel 304 | ASTM A276 |
| 6 | Hinge Pin | Stainless Steel 304/Ductile Iron | ASTM A276/ASTM A536 65-45-12 |
| 7 | Clapper | Stainless Steel 304 | ASTM A276 |
| 8 | Seat | C95400 | ASTM A148 |
| 9 | Clamping Ring | Stainless Steel 304 | ASTM A276 |
| 10 | Locknut | Stainless Steel 304 | ASTM A276 |
| 11 | Facing Seal | EPDM | ASTM D2000 |
| 12 | Gasket | EPDM | ASTM D2000 |
| 13 | Bolt | Stainless Steel 304 | ASTM A276 |
| 14 | Plug | Steel 1045 | ASTM A29 |



Dimensions

| Size | L | D | D1 | D2 | B | C | P1 | | | P2 | | | | P3 | | |
|------|-----|-----|---------|---------|-------|-------|---------|-----------|-------------|-------------|-------------|-------------|-----------|---------|---------|---------|
| 2" | 169 | 152 | 57.15 | 60.3 | 7.95 | 15.88 | Rc½-14 | Rc½-14 | Rc¾-14 | Rc1-11 | Rc1 ¼-11 | Rc1 ½-11 | Rc2-11 | Rc¼-19 | Rc¾-19 | Rc½-14 |
| | | | ½-14NPT | ½-14NPT | | | ¾-14NPT | 1-11.5NPT | 1 ¼-11.5NPT | 1 ½-11.5NPT | 2-11.5NPT | ¼-18NPT | ¾-18NPT | ½-14NPT | | |
| 2½" | 181 | 178 | 69.09 | 73 | 7.95 | 15.88 | Rc½-14 | Rc½-14 | Rc¾-14 | Rc1-11 | Rc1 ¼-11 | Rc1 ½-11 | Rc2-11 | Rc¼-19 | Rc¾-19 | Rc½-14 |
| | | | ½-14NPT | ½-14NPT | | | ¾-14NPT | 1-11.5NPT | 1 ¼-11.5NPT | 1 ½-11.5NPT | 2-11.5NPT | ¼-18NPT | ¾-18NPT | ½-14NPT | | |
| 3" | 198 | 191 | 84.94 | 88.9 | 7.95 | 15.88 | Rc½-14 | Rc½-14 | Rc¾-14 | Rc1-11 | Rc1 ¼-11 | Rc1 ½-11 | Rc2-11 | Rc¼-19 | Rc¾-19 | Rc½-14 |
| | | | ½-14NPT | ½-14NPT | | | ¾-14NPT | 1-11.5NPT | 1 ¼-11.5NPT | 1 ½-11.5NPT | 2-11.5NPT | ¼-18NPT | ¾-18NPT | ½-14NPT | | |
| 4" | 214 | 229 | 110.08 | 114.3 | 9.53 | 15.88 | Rc½-14 | Rc½-14 | Rc¾-14 | Rc1-11 | Rc1 ¼-11 | Rc1 ½-11 | Rc2-11 | Rc¼-19 | Rc¾-19 | Rc½-14 |
| | | | ½-14NPT | ½-14NPT | | | ¾-14NPT | 1-11.5NPT | 1 ¼-11.5NPT | 1 ½-11.5NPT | 2-11.5NPT | ¼-18NPT | ¾-18NPT | ½-14NPT | | |
| 5" | 248 | 254 | 135.48 | 139.7 | 9.53 | 15.88 | Rc½-14 | Rc½-14 | Rc¾-14 | Rc1-11 | Rc1 ¼-11 | Rc1 ½-11 | Rc2-11 | Rc¼-19 | Rc¾-19 | Rc½-14 |
| | | | 137.03 | 141.3 | | | ½-14NPT | ½-14NPT | ¾-14NPT | 1-11.5NPT | 1 ¼-11.5NPT | 1 ½-11.5NPT | 2-11.5NPT | ¼-18NPT | ¾-18NPT | ½-14NPT |
| 6" | 270 | 280 | 160.78 | 165.1 | 9.53 | 15.88 | Rc½-14 | Rc½-14 | Rc¾-14 | Rc1-11 | Rc1 ¼-11 | Rc1 ½-11 | Rc2-11 | Rc¼-19 | Rc¾-19 | Rc½-14 |
| | | | 163.96 | 168.3 | | | ½-14NPT | ½-14NPT | ¾-14NPT | 1-11.5NPT | 1 ¼-11.5NPT | 1 ½-11.5NPT | 2-11.5NPT | ¼-18NPT | ¾-18NPT | ½-14NPT |
| 8" | 325 | 343 | 211.6 | 216.3 | 11.13 | 19.05 | Rc½-14 | Rc½-14 | Rc¾-14 | Rc1-11 | Rc1 ¼-11 | Rc1 ½-11 | Rc2-11 | Rc¼-19 | Rc¾-19 | Rc½-14 |
| | | | 214.4 | 219.1 | | | ½-14NPT | ½-14NPT | ¾-14NPT | 1-11.5NPT | 1 ¼-11.5NPT | 1 ½-11.5NPT | 2-11.5NPT | ¼-18NPT | ¾-18NPT | ½-14NPT |
| 10" | 457 | 406 | 268.3 | 273 | 12.7 | 19.05 | Rc½-14 | Rc½-14 | Rc¾-14 | Rc1-11 | Rc1 ¼-11 | Rc1 ½-11 | Rc2-11 | Rc¼-19 | Rc¾-19 | Rc½-14 |
| | | | ½-14NPT | ½-14NPT | | | ¾-14NPT | 1-11.5NPT | 1 ¼-11.5NPT | 1 ½-11.5NPT | 2-11.5NPT | ¼-18NPT | ¾-18NPT | ½-14NPT | | |
| 12" | 535 | 483 | 318.3 | 323.9 | 12.7 | 19.05 | Rc½-14 | Rc½-14 | Rc¾-14 | Rc1-11 | Rc1 ¼-11 | Rc1 ½-11 | Rc2-11 | Rc¼-19 | Rc¾-19 | Rc½-14 |
| | | | ½-14NPT | ½-14NPT | | | ¾-14NPT | 1-11.5NPT | 1 ¼-11.5NPT | 1 ½-11.5NPT | 2-11.5NPT | ¼-18NPT | ¾-18NPT | ½-14NPT | | |