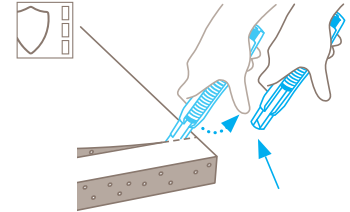


TECHNICAL DATA SHEET

SECUBASE 383 NO. 383001

Safety technology



Blade retraction and locking – optional safety

The automatic blade retraction of the SECUBASE 383 protects you from cutting injuries. This requires that you remove your thumb from the slider after piercing the cutting material. Alternatively, you can also lock the slider and the blade. When you release the lock, the blade retracts.



SAFETY KNIFE WITH AUTOMATIC BLADE RETRACTION AND OPTIONAL LOCKING.

Order No. 383001.02

How to cut is up to you.

A safety knife that also performs as a cutter? The new SECUBASE 383 can be both. Your cutting tool is equipped with automatic blade retraction to prevent cutting injuries. Some cutting tasks, such as saw cuts, however, are easier with a fixed blade. The blade can therefore be locked in seven different positions to enable efficient working.

Long blade extension

"Long" is actually an understatement: the blade can extend to a maximum of 7.8 cm. The SECUBASE 383 can then be used for the safe and easy cutting of materials such as 4-ply cardboard boxes, bagged goods, paper rolls, building foam and polystyrene sheets.

Locking and retraction

A choice of seven settings (cutting depths from 7 mm to 73 mm) is available when you want to use your SECUBASE 383 as a cutter. Afterwards, release the lock and the blade will retract as usual.

Ergonomic handle

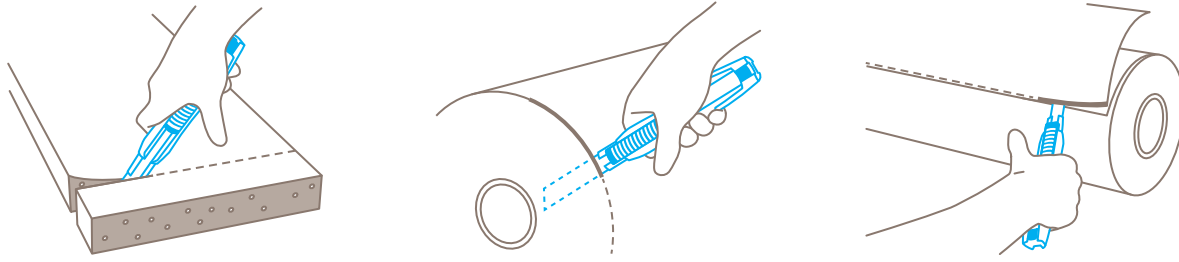
The SECUBASE 383 has a consistent ergonomic design to protect your hand. The slightly tapered handle is very comfortable to hold. Another ergonomic feature is the slider, which is particularly easy to move because of its built-in ramp.

For right and left hander

The SECUBASE 383 is supplied ready for use by right-handers. Left handers just need to turn the blade by 180° to start cutting. The slider and the lock are operated with the thumb.








Easy blade change

To access the long, flexible blade, use the blue blade change button at the end of the handle. You can now pull out the inner section including the slider. The blade is held in position by two magnets.















PRODUCT FEATURES

Technical features

 Optional safety	 Safer blade change (with magnet)	 Very abrasion resistant	 Very ergonomic
 Safety lock	 Adjustable cutting depth	 For right and left handers	 Lanyard hole

Main cutting materials

 Cardboard: up to 4-ply	 Layers of foil or paper	 Wrapping, stretch and shrink foil	 Foam, polystyrene
 Bagged goods	 Tape	 Plastic strapping band	 Coated film
 Laminated film	 PVC	 Felt	 Fleece

Installed blade



NO. 79
0.50 mm, 109.5 mm long

Optional blade



NO. 179
0.50 mm, 109.5 mm long, stainless



NO. 379
0.50 mm, 109.5 mm long, serrated edge

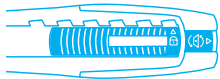


NO. 7940
0.50 mm, 71.2 mm long

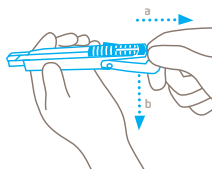


NO. 17940
0.50 mm, 71.2 mm long, stainless

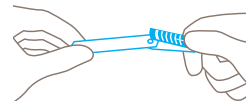
BLADE CHANGE



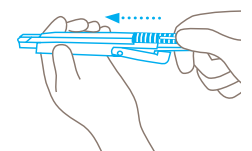
Only possible when **unlocked**. That means: Don't push the safety device upwards.



Pull the blade change button to the back as marked by the arrow (a), flip the end of the handle downwards (b) and **move the blade out of the handle** by using the slider.



Lift the slider, take out and change the blade, then position the new blade **exactly on the cam**. For left hand use, turn blade over. The two magnets fix the blade additionally.



At last, slide the inner part with the blade **back into the handle** and flip the end of the handle upwards. Release and snap back the blade to ensure flawless functionality.

SERVICES OFFERED



Safety poster



Training video



Technical data sheet



Consulting service

PRODUCT AND PACKAGING DETAILS

Order No.	NO. 383001.02	Packaging unit	1 in single unit box
Knife size (L x W x H)	170.5 x 25 x 34 mm	Size Single unit box	178 x 36.5 x 26 mm
Weight knife	78.5 g	Weight single unit box	93.0 g
Basic material	Glass fibre reinforced plastic	EAN Code single unit box	4002632803277
Cutting depth	3 - 73 mm	Quantity in outer pack	10 knives
		Size outer pack	135 x 78 x 182 mm
		Weight outer pack	990.0 g
		EAN Code outer pack	4002632853272
		Customs tariff number	82119300

CERTIFICATES AND AWARDS



SAFETY ADVICE

To ensure that you use your new MARTOR knife safely and most effectively, please read and note the following user-instructions. Please keep the written guide in a safe place so that you can access it at any time.

1. General application instructions: Please always use the product carefully for manual cutting work only and not for any purposes other than those that are intended. Please take the correct handling and the proper use of the knives into account in this regard. As an additional safety measure, we recommend the wearing of safe gloves.

2. Special application instructions to avoid the danger of injuries: Always take great care when handling the product. Before first use, familiarise yourself with the safety technology and how it works. Before every further use, check the knife for proper functioning. Only use cutting tools that are in perfect condition with sharp, clean and undamaged MARTOR blades. Also make sure that the knife's operation is not impaired by the material to be cut or by dirt or particle deposits around the blade. **CAUTION: The blade is sharp and can result in serious and deep cuts. Therefore, never reach into the blade!** Do not place your free hand in the line of cutting and never cut directly towards you.

3. Replacement of spare parts: Replace any blades that become dull at the right time! Use only the replacement blades from MARTOR for this purpose. Dispose of old blades in a proper fashion. They should not be placed in a waste paper bin, as this poses a considerable danger of injuries. Never perform any repairs yourself. If the knife shows signs of aging or any other wear, e.g. which impair safety features, blade changing or usage, the knife must be taken out of service and replaced. Do not modify this product in any way. Modifications of any kind may impair product safety. **CAUTION:** The risk of injury caused by manipulation of this product is extremely high.

4. Non-use of the knife: Always secure the blade in such a way (depending on product type) that injuries due to cuts are excluded. Store the knife in a secure place.

5. Care instructions: To guarantee a long service life, always keep the knife clean and do not expose it to unnecessary soiling and humidity.

CAUTION: No liability will be assumed for consequential losses. Subject to technical changes and errors! This knife does not belong in the hands of children!

ACCESSORIES

BELT HOLSTER S WITH CLIP NO. 9920



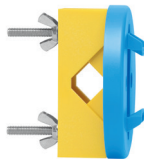
What do you do with your cutting tools when you are not actually using them? The MARTOR BELT HOLSTER S is a robust holder that allows you to carry all compact MARTOR knives as well as our safety scissors at all times. In addition, the compartments are designed to allow you to load different tools: for example you can also carry a pen or a pack of blades. The MARTOR BELT HOLSTER is the ideal place to stow your tools safely when moving from A to B - and have them at hand, as soon as they are required.

USED BLADE CONTAINER NO. 9810



You can fill the USED BLADE CONTAINER with the content of your SAFEBOX. Or directly with your used blades. When the box is full, turn the lid until it shuts. Now the box cannot be reopened. The next step is to safely and completely dispose of the filled USED BLADE CONTAINER as normal waste.

WALL MOUNT BRACKET USED BLADE CONTAINER NO. 9845



Include it in your order now! With this mounting bracket you can fix your USED BLADE CONTAINER to a central location. Use the clamp and screws and nuts supplied with the product to attach it to either a pipe or a rod.

MANUFACTURER

MARTOR KG | Lindgesfeld 28 | 42653 Solingen | Germany
T +49 212 73870-0 | info@martor.de | www.martor.com