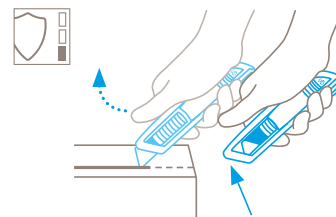


## TECHNICAL DATA SHEET

### SECUNORM 500 NO. 50000410

#### Safety technology



#### Automatic blade retraction – a high degree of safety

The automatic blade retraction of the SECUNORM 500 guarantees a high degree of safety from cut injuries. As soon as you have started to cut, take your thumb off the slider. Then the blade will retract into the handle immediately after leaving the material being cut.



ROBUST SAFETY KNIFE WITH AUTOMATIC BLADE RETRACTION DESIGNED FOR ALL NORMAL CUTTING JOBS.

**Order No.** 50000410.02

#### The safety knife. With trapezoid blade.

Over 40 years ago the SECUNORM PROFI set standards in safety, robustness and ergonomics. Its successor goes several steps further. For example, the new aluminium handle significantly improves handling and makes cutting easier, the new slider can be operated from both sides and the blade change has been made so much simpler. Together these improvements combine with the proven automatic blade retraction to increase protection from cutting injuries.

#### Ergonomic handle

The good "Ergonomics" can be felt all over the SECUNORM 500, for example in the newly shaped handle which fits comfortably into the hand. Or in details such as the nicely rounded knife end or the non-slip soft-grip on the slider.

#### Abrasion resistant

The robust aluminium handle is designed for the most demanding and frequent cutting tasks. Like its popular predecessor, it is a tough all-rounder capable of taking on any cutting challenge.

#### Double-sided slider

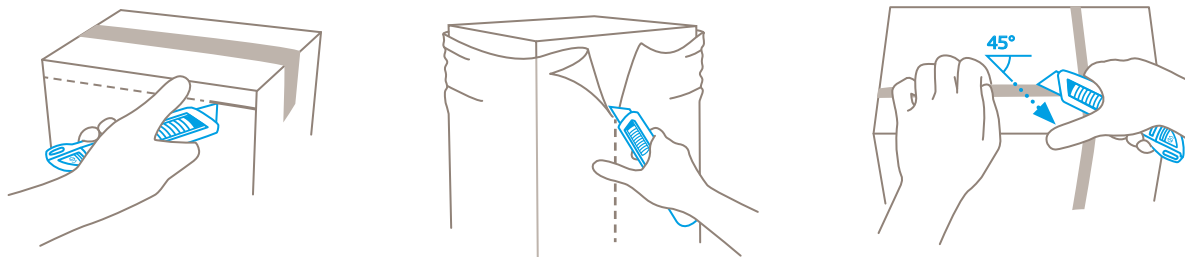
With the predecessor, the SECUNORM PROFI, there were both left and right handed models. With the modern successor, anyone can cut effectively – with the ability to change hands when the task requires it.

#### Tool-less blade change

Blade changing without tools. The SECUNORM 500 comes with an intuitively operated blade change button. Press once to remove the blade carrier with its securely held blade.

#### Blade changing made easy

The blade cover remains in the required position when opened. The blade is then easy to access and is removed using the bladeless edge, minimising the risk of injury.



PRODUCT FEATURES

Technical features

High safety	Safer blade change (with magnet)	Very abrasion resistant	Very ergonomic
2-cutting edge blade	Cutting depth (19 mm)	Ceramic blade insertable	Soft grip
For right and left handers	Lanyard hole		

Main cutting materials

Cardboard: up to 3-ply	Wrapping, stretch, and shrink foil	Plastic strapping band	Tape
Bagged goods	Layers of foil or paper	Yarn, cord	Textile, material
Felt	Fleece		

Installed blade



**NO. 5232**  
0.63 mm, deep-edged

Optional blade



**NO. 65232**  
0.63 mm, rounded blade tips, deep-edged



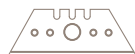
**NO. 65232C**  
0.65 mm, ceramic, rounded blade tips, deep-edged



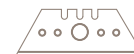
**NO. 5634**  
0.63 mm, rounded blade tips



**NO. 56**  
0.63 mm



**NO. 610**  
0.63 mm, stainless



**NO. 52**  
0.63 mm



**NO. 852**  
0.63 mm, stainless, TiN-coated



**NO. 85232**  
0.63 mm, deep-edged, TiN-coated



**NO. 85233**  
0.63 mm, 1-sided ground-edge, TiN-coated

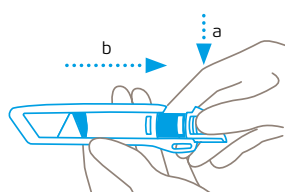


**NO. 5233**  
0.63 mm, 1-sided ground-edge

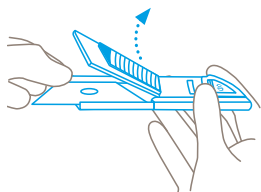


**NO. 8852**  
0.63 mm, TiN-coated

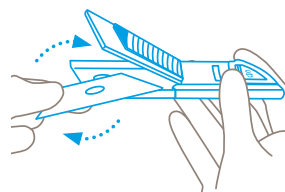
BLADE CHANGE



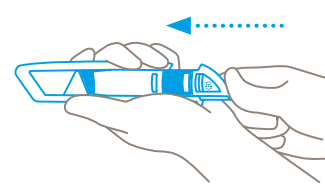
Press the blade change button and remove the plastic insert from the rear of the handle.



Hold the **blunt** side of the blade and use it to lift the blade cover upwards. The cover remains in the open position.



Reverse or replace the blade. Make sure you position the blade-**exactly** over the locating lug.



Close the blade cover and push the plastic insert back into the handle until the blade change button **audibly** clicks.

## SERVICES OFFERED



Safety poster



Training video



Technical data sheet



Consulting service

## PRODUCT AND PACKAGING DETAILS

Order No.	NO. 50000410.02	Packaging unit	1 in single unit box
Knife size (L x W x H)	143 x 16 x 36 mm	Size Single unit box	154 x 22 x 38 mm
Weight knife	72.5 g	Weight single unit box	86.0 g
Basic material	Aluminium	EAN Code single unit box	4002632800849
Cutting depth	19 mm	Quantity in outer pack	10 knives
		Size outer pack	115 x 80 x 160 mm
		Weight outer pack	907.0 g
		EAN Code outer pack	4002632850844
		Customs tariff number	82119300

## SAFETY CERTIFICATE

Date of issue	08.05.2018
Certification	GS certificate NO. 603574-6653-55094-2018/2

### Certificates and awards



## SAFETY ADVICE

To ensure that you use your new MARTOR knife safely and most effectively, please read and note the following user-instructions. Please keep the written guide in a safe place so that you can access it at any time.

**1. General application instructions:** Please always use the product carefully for manual cutting work only and not for any purposes other than those that are intended. Please take the correct handling and the proper use of the knives into account in this regard. As an additional safety measure, we recommend the wearing of safe gloves.

**2. Special application instructions to avoid the danger of injuries:** Only use knives that are in perfect condition and have sharp, clean and undamaged MARTOR blades. Employ the utmost care when handling the knives. Prior to use, familiarise yourself with the safety features and their functioning. Ensure that these safety features are not impaired by the type of material to be cut. **CAUTION:** The blade is sharp and can result in serious and deep cuts. Therefore, never reach into the blade! Do not place your free hand in the line of cutting and never cut directly towards you.

**3. Replacement of spare parts:** Replace any blades that become dull at the right time! Use only the replacement blades from MARTOR for this purpose. Dispose of old blades in a

proper fashion. They should not be placed in a waste paper bin, as this poses a considerable danger of injuries. Never perform any repairs yourself. If the knife shows signs of aging or any other wear, e.g. which impair safety features, blade changing or usage, the knife must be taken out of service and replaced. Do not modify this product in any way. Modifications of any kind may impair product safety. **CAUTION:** The risk of injury caused by manipulation of this product is extremely high.

**4. Non-use of the knife:** Always secure the blade in such a way (depending on product type) that injuries due to cuts are excluded. Store the knife in a secure place.

**5. Care instructions:** To guarantee a long service life, always keep the knife clean and do not expose it to unnecessary soiling and humidity.

**CAUTION: No liability will be assumed for consequential losses. Subject to technical changes and errors! This knife does not belong in the hands of children!**

## ACCESSORIES

---

### BELT HOLSTER S WITH CLIP NO. 9920



What do you do with your cutting tools when you are not actually using them? The MARTOR BELT HOLSTER S is a robust holder that allows you to carry all compact MARTOR knives as well as our safety scissors at all times. In addition, the compartments are designed to allow you to load different tools: for example you can also carry a pen or a pack of blades. The MARTOR BELT HOLSTER is the ideal place to stow your tools safely when moving from A to B - and have them at hand, as soon as they are required.

### HOLSTER SMALL NO. 9842



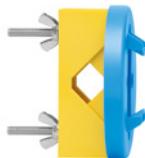
This blue plastic HOLSTER is just like the black version, only smaller. Use it to safely store and transport SECUNORM safety knives MULTISAFE, PROFI LIGHT, PROFI40, SECUNORM 500 and the SECUNORM 300. With this HOLSTER on your hip, your knife will always be within grasping range.

### USED BLADE CONTAINER NO. 9810



You can fill the USED BLADE CONTAINER with the content of your SAFEBOX. Or directly with your used blades. When the box is full, turn the lid until it shuts. Now the box cannot be reopened. The next step is to safely and completely dispose of the filled USED BLADE CONTAINER as normal waste.

### WALL MOUNT BRACKET USED BLADE CONTAINER NO. 9845



Include it in your order now! With this mounting bracket you can fix your USED BLADE CONTAINER to a central location. Use the clamp and screws and nuts supplied with the product to attach it to either a pipe or a rod.

### SAFEBOX NO. 108000



The SAFEBOX is large enough to store a large number of used blades safely. And at the same time, it is compact enough to carry with you. The two slits are not only used for filling, but also to „shorten“ your snap-off blades. When your SAFEBOX is full, empty it into your USED BLADE CONTAINER.

---

## MANUFACTURER

MARTOR KG | Lindgesfeld 28 | 42653 Solingen | Germany  
T +49 212 73870-0 | info@martor.de | www.martor.com